

CRAFTING DETAILS

shaping stories





Sustainability and Craftsmanship



About us

Mission statement

DMR Design&Build aims to provide professional service to its clients' satisfaction by providing service excellence, honouring deadlines, and personalized design according to clients' requirements.

Our Value

- Our Passion for creativity is expressed in everything we do!
- Customer driven
- Bespoke design
- Seamless service delivery
- Staff well-being

Our Vision

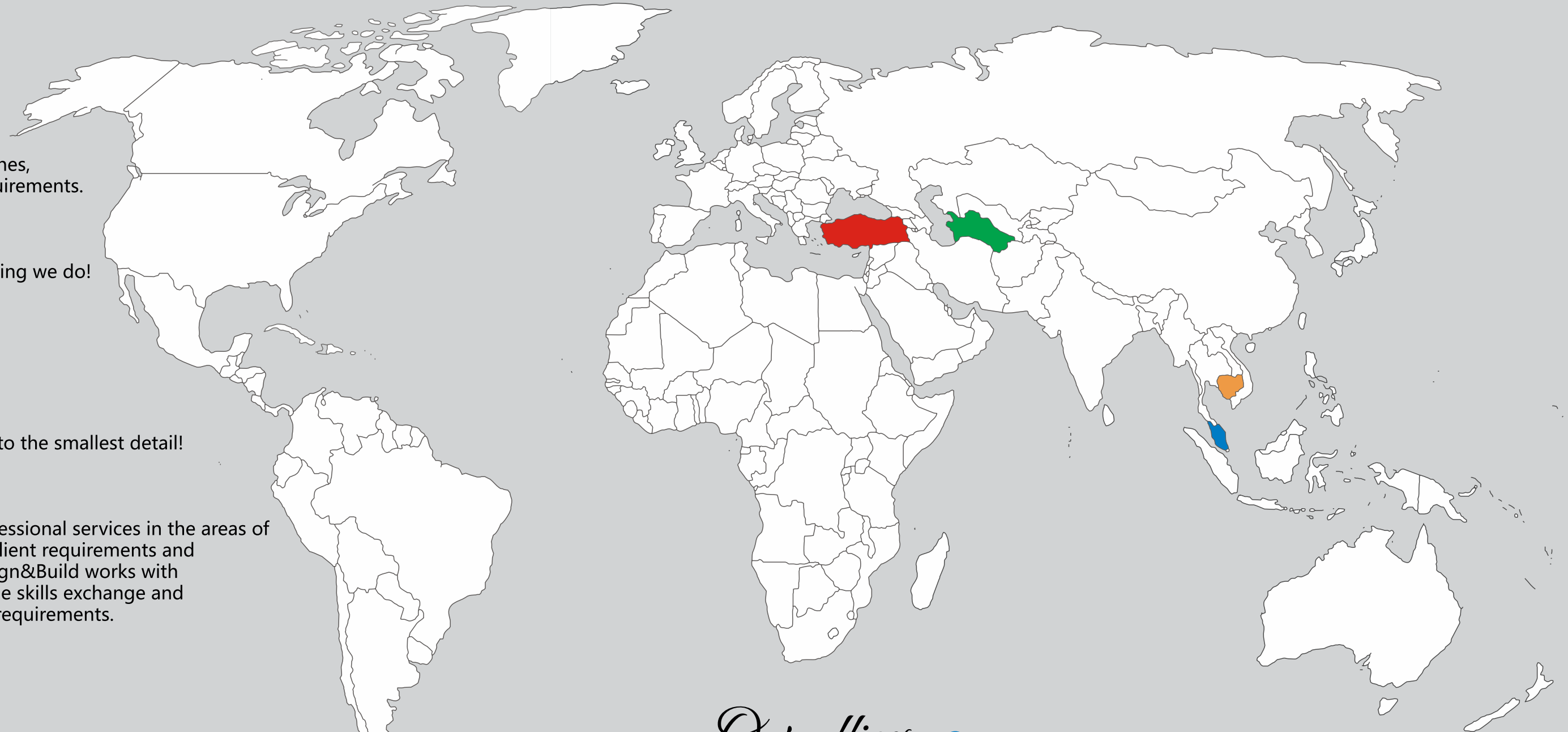
Delivering Bespoke and innovative designs down to the smallest detail!

DMR Design&Build has the ability to provide professional services in the areas of Interior design, Project management, evaluating client requirements and procurement of furniture and artworks. DMR Design&Build works with well established architectural companies to provide skills exchange and innovative professional services to satisfy clients' requirements.

Services Offered

- Evaluation of clients' requirements
- Project management and project coordination
- Analysing the space according to client's need
- Liaison with architects, contractors, decorators and other specialists in order to provide a well-executed design scheme
- Procurement of loose furniture and fittings

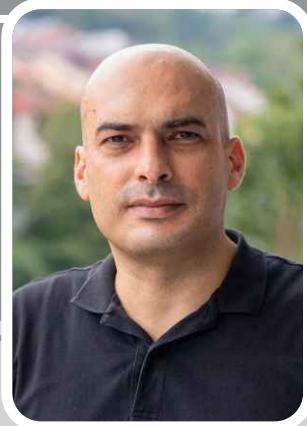
The above professional services may be segmented into distinctive stages should this be a requirement of the project and tailored according to the client's brief. All the wooden custom made furniture is manufactured locally by one of our associate companies.



Our offices

-  **MALAYSIA / Kuala Lumpur**
DMR Design & Build Sdn Bhd Unit 01-11 , Suite Servis Suria ,
Jalan 30/38A , Taman Sri Sinar Segambut , 51200 Kuala Lumpur
-  **TURKMENISTAN / Ashgabat**
Koshi, Taslama Street 39, +993 62 463883
-  **TURKEY / Istanbul**
Shirinevler, 22 - 3B, +90543 687 79 79
-  **CAMBODIA / Phnom Penh**
Level 5, Icon Build., Norodom Boulevard, +855 85 592 143

BOARD MEMBERS



**RAHIM
AMANGELDI**
Founder - Architect



**JOSEPH
KIWANA**
CEO - MA. Architect



**AYLAR
AMANGELDIEVA**
Chief Interior Designer



**LILY
FADHILLAH**
HR Director

OUR REFERENCES



Administrative building,
Turkmenbashy



Interior of the "SETEL" office,
Kuala Lumpur, Vertical Tower



Interior of the «Corus» hotel,
Kuala Lumpur, Malaysia



Starhill Gallery Bukit Bintang



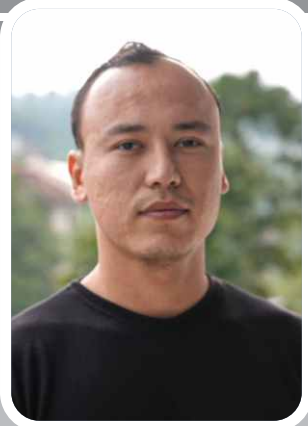
Interior of the train station,
Bereket



DESIGN OFFICE



**ISMAIL
HUDAYBERGENOV**
Architect - Purchasing & Sales
manager



**SOYUN
SAPARYYEW**
Architect - Factory Director



**UMYT
AMANOV**
Visualizer



**FARHA
ZAWAWI**
Interior Designer



YAHALA RESTAURANT-
AMPANG BRANCH



Alpha Galaxy group of companies
Villa project / Kuala Lumpur

JIMMY CHOO
Architectural/Interior Work
of Luxury Store
Phnom Penh, Cambodia



Architectural/Interior Work
of Flagship Store
Phnom Penh, Cambodia



Architectural/Interior Work
Phnom Penh, Cambodia



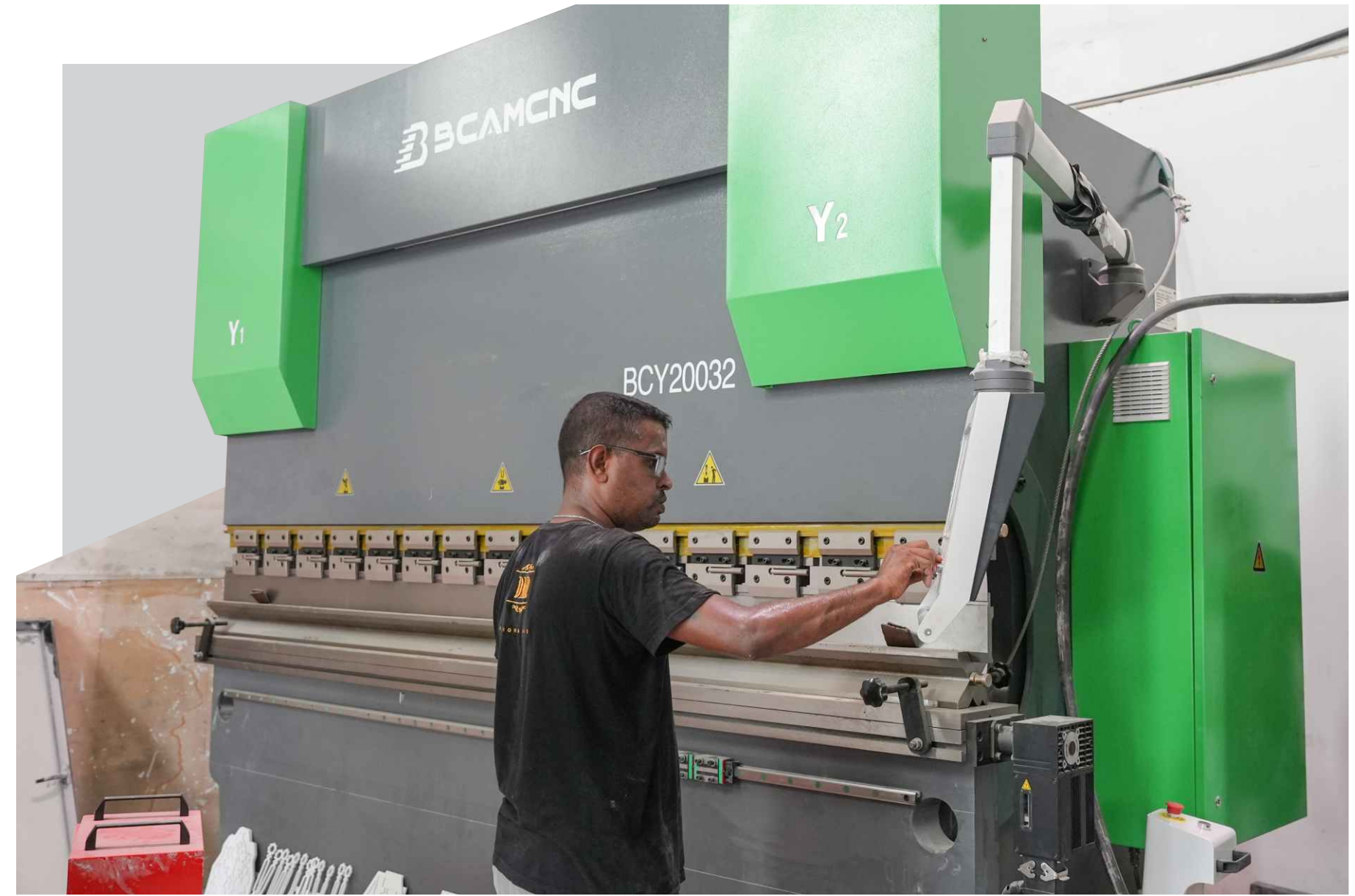
Villa project / Kuala Lumpur

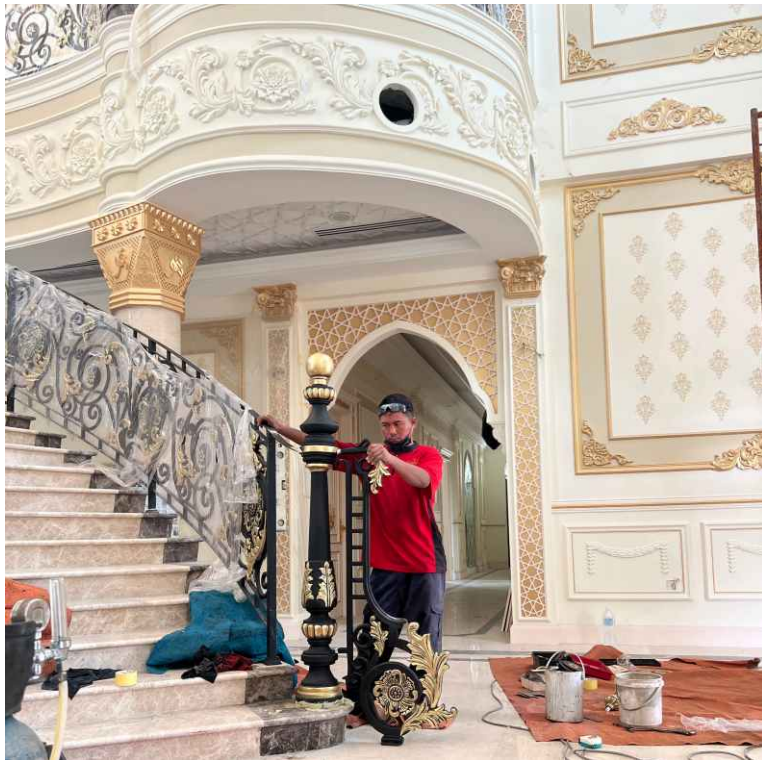
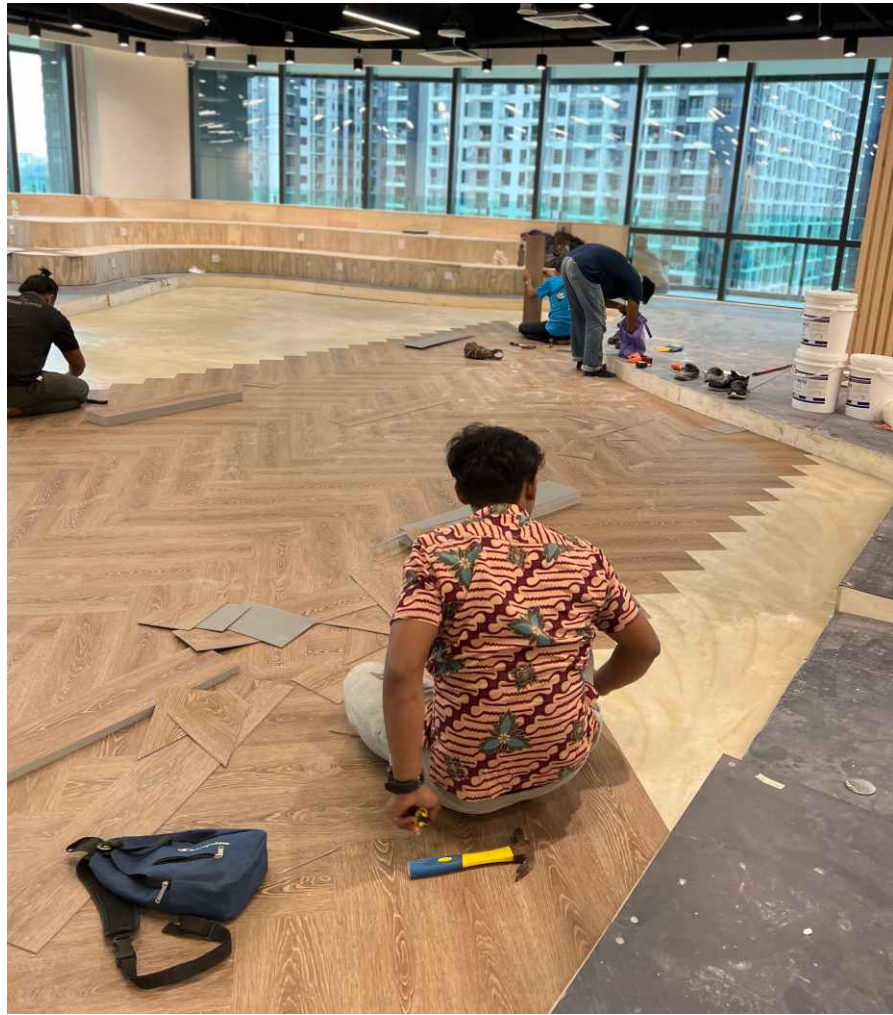


INTERIOR DESIGN

Our Factory







Villa Meru Project



3D Render



Completed



SPIRAL MARBLE STAIRCASE



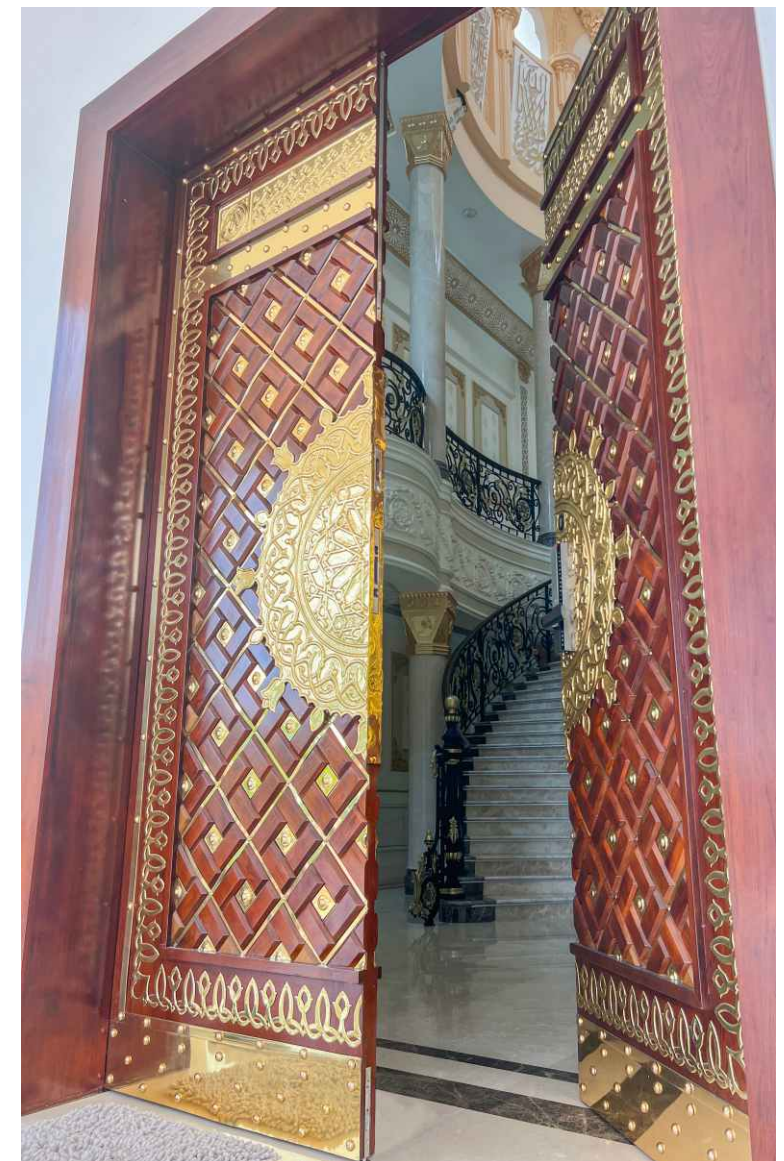
DOME WITH DECORATED ISLAMIC CALLIGRAPHY



We don't simply build houses; we sculpt dreams. Our passion ignites in every corner, from the intricately carved entry doors to the sprawling living area where comfort meets opulence. This is the embodiment of our vision: where individuality reigns, expertise shines, and excellence is not just a goal, but a promise delivered



MAJLIS ROOM

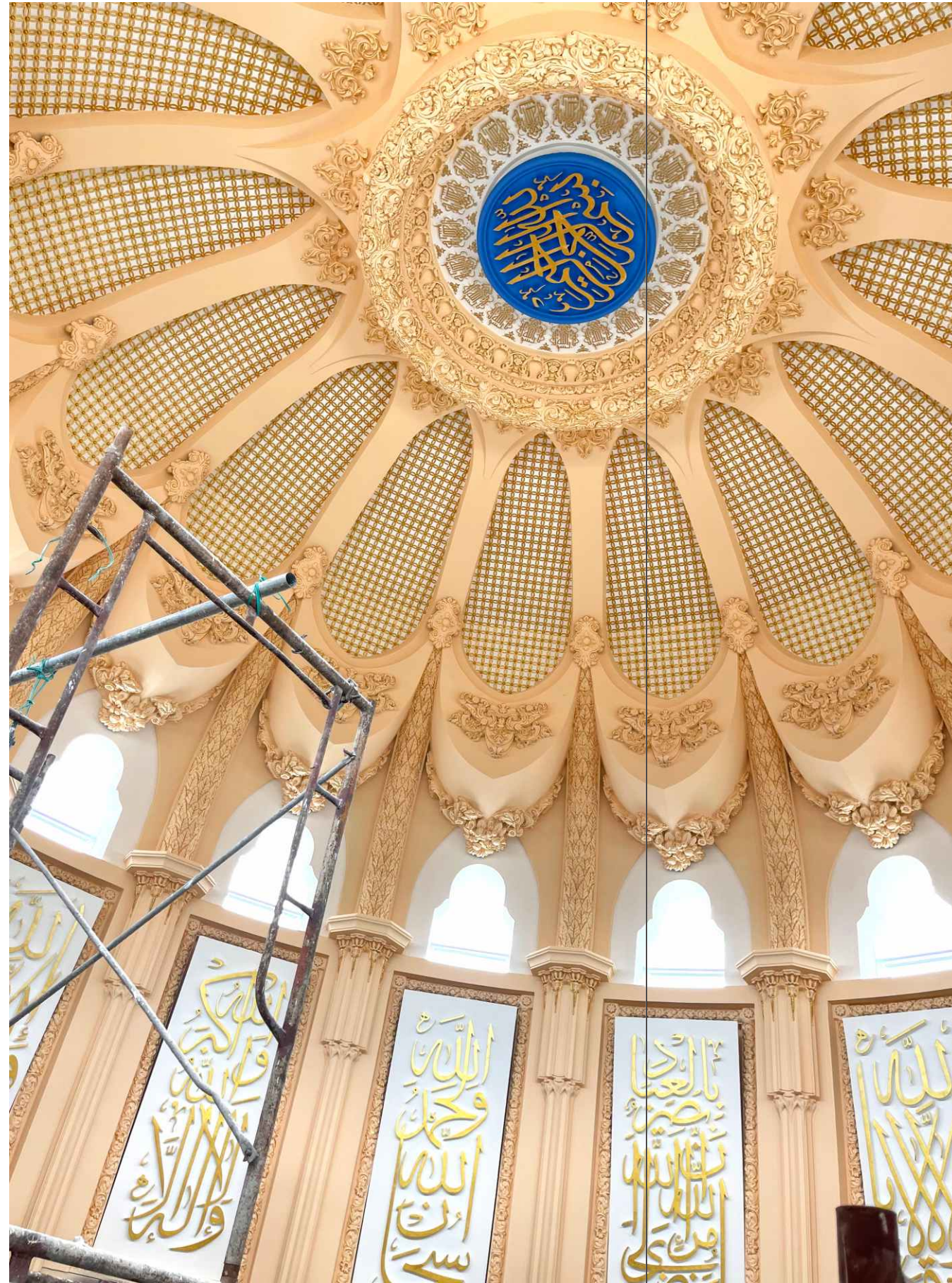


Meru Project – A Grand 20,000 Sq. Ft. Luxury Residence

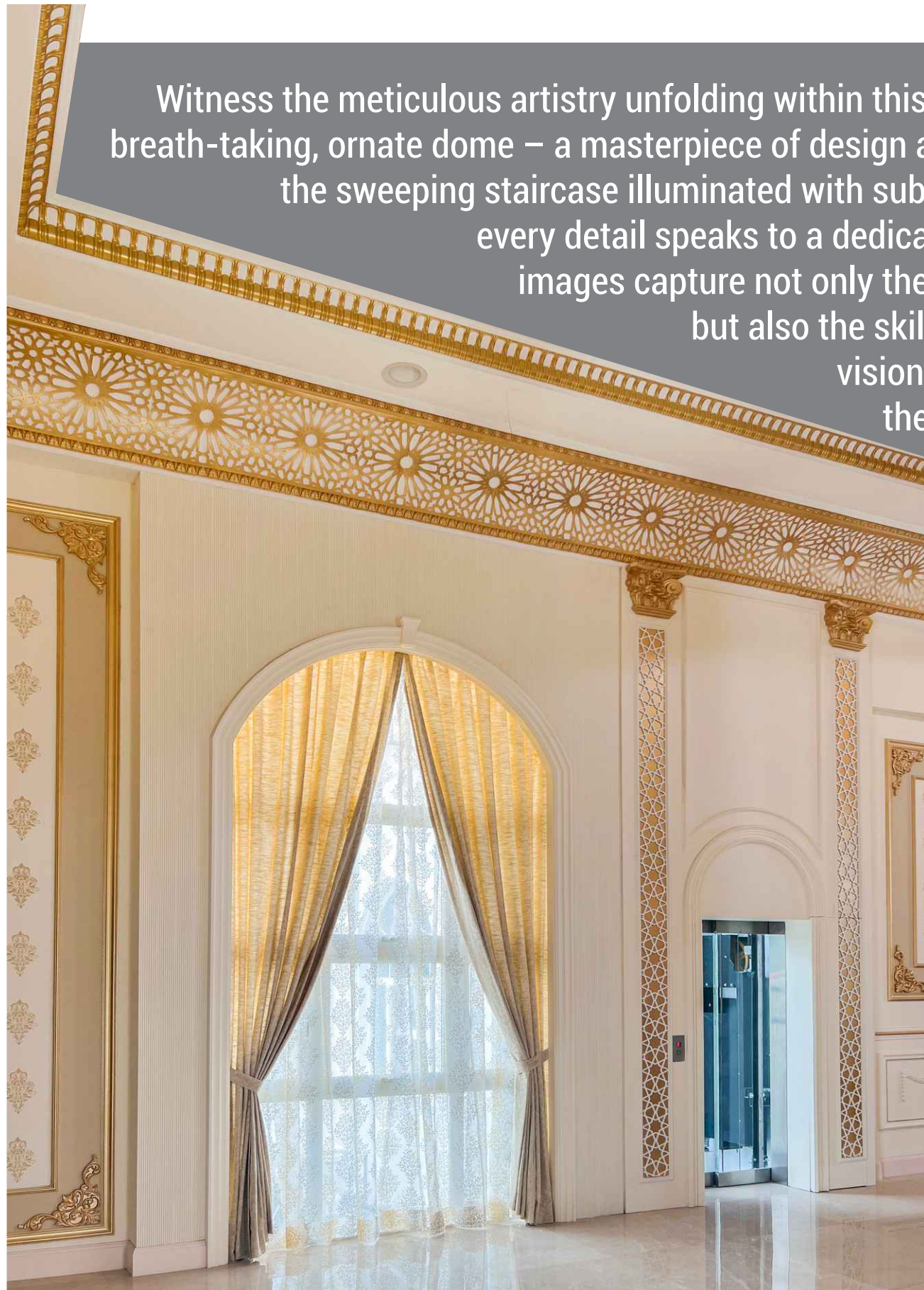
The **Meru Project** stands as one of our most **challenging yet rewarding** residential projects, showcasing our expertise in luxury design and craftsmanship. Spanning **20,000 square feet**, this **landed home** is a masterpiece of elegance and functionality, blending **Islamic architecture** with modern luxury.

Key Features:

- A **9-meter-wide dome**, beautifully designed with **Islamic calligraphy** and **naturally ventilated windows** for an airy, serene ambiance.
- A **grand spiral staircase** with custom **iron spiral handrails**, adding a majestic touch.
- **Whole-marble columns** imported from Turkey, emphasizing opulence and durability.
- **Private walk-in wardrobes** and **ensuite bathrooms** in every room for ultimate comfort.
- A **state-of-the-art cinema room**, designed for a premium home entertainment experience.
- A **spacious dining hall** accommodating **25 guests**, perfect for gatherings.
- An **extravagant luxurious majlis room**, designed to reflect elegance and tradition.



Witness the meticulous artistry unfolding within this grand home. From the breath-taking, ornate dome – a masterpiece of design and craftsmanship – to the sweeping staircase illuminated with subtle, embedded lighting, every detail speaks to a dedication to excellence. The images capture not only the opulence of the space but also the skilled hands bringing this vision to life. Experts at work, their focused expressions reflect their deep commitment to their craft, ensuring each element, from the intricate calligraphy on the walls to the gilded accents, achieves a level of unparalleled beauty and precision. This is a testament to the power of individual expertise, working in harmony to create a truly inspiring and sacred space

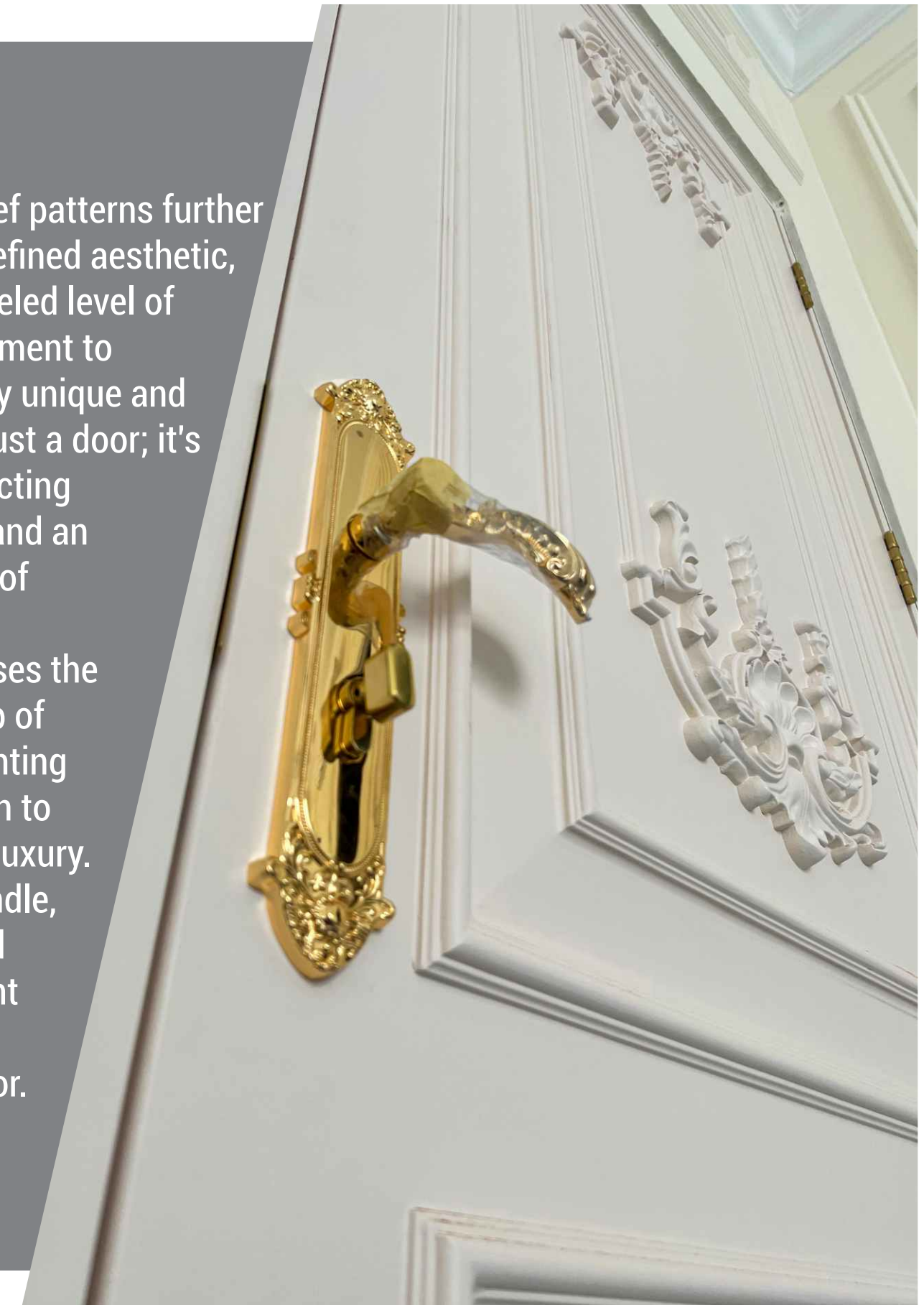


DETAILS

The delicate, raised relief patterns further accentuate the door's refined aesthetic, speaking to an unparalleled level of expertise and a commitment to creating something truly unique and exceptional. This isn't just a door; it's a statement piece, reflecting a dedication to quality and an appreciation for the art of individualized design.

This close-up showcases the exquisite craftsmanship of a bespoke door, highlighting the meticulous attention to detail that defines true luxury.

The gleaming gold handle, with its ornate, sculpted design, stands in elegant contrast against the pristine white of the door.





STUDY ROOM

A meticulously crafted interior that's adorned with CNC patterns. The juxtaposition of a traditional office setting rendered in warm wood tones and a close-up of intricate, fine latticework emphasizes the attention to detail and mastery of both classic and contemporary design elements. The apparent expertise in incorporating ornate patterns and lighting creates a unique ambiance, suggesting a commitment to bespoke solutions that reflect individuality and elevate the ordinary.



ART WORK

The warm wood tones setting contrast with the intricate, illuminated latticework, showcase the precision and attention to detail reinforcing a cohesive and sophisticated aesthetic. Our expertise in integrating ornate patterns and lighting creates a distinctive ambiance, reflecting a commitment to bespoke solutions that elevate every space.



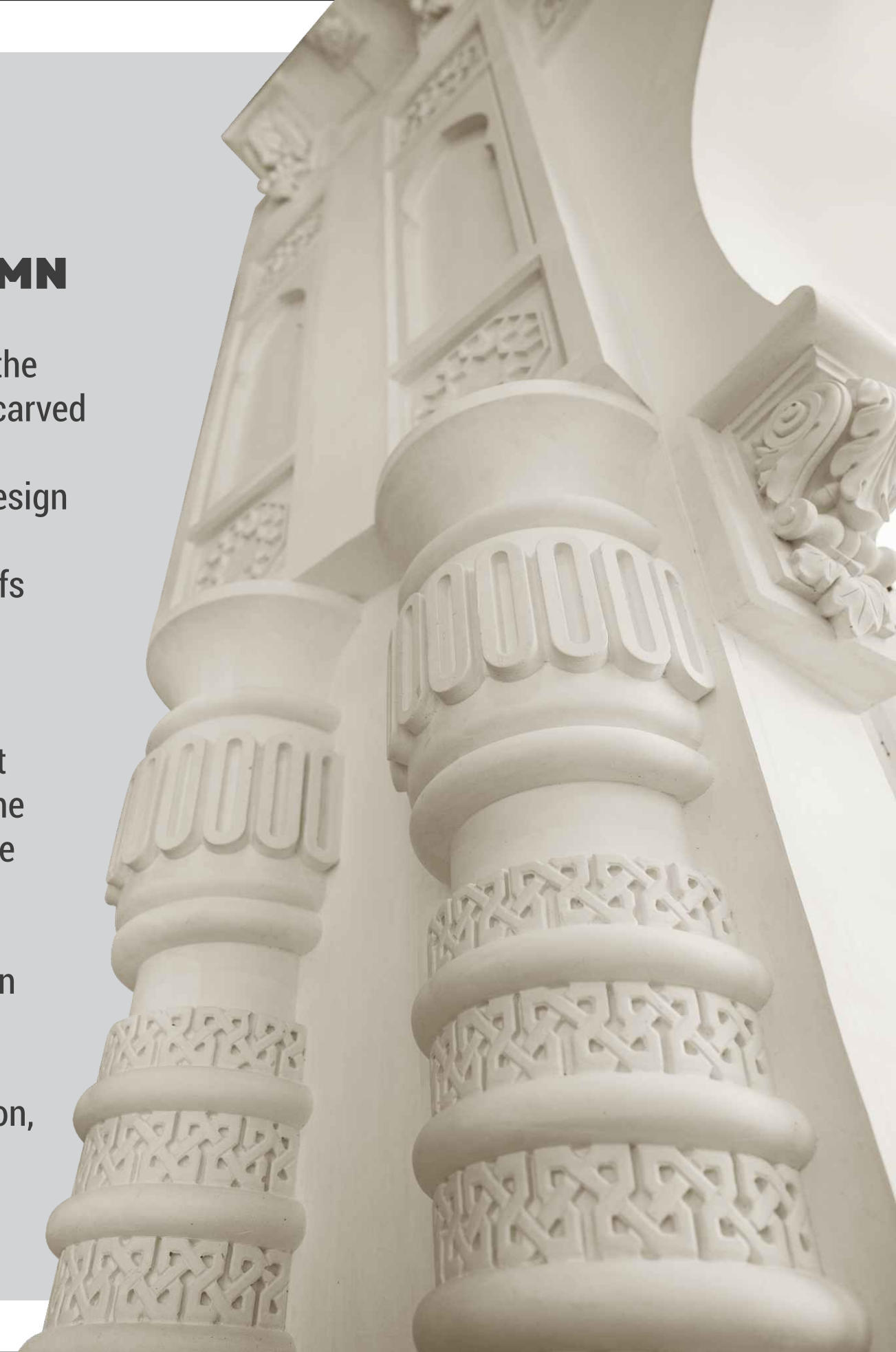
MAJLIS ROOM

This interior is a masterpiece of opulence and precision, where elegance is woven into every detail. Repeating arched alcoves, framed by ornate white columns with gold accents, create a sense of grandeur and harmony. Soft, cream-colored drapes diffuse natural light, casting an ethereal glow over the polished marble floor. From the intricate ceiling mouldings to the decorative wall patterns, every element reflects a bespoke design vision brought to life with expert craftsmanship. This is more than a space—it is a testament to artistry, sophistication, and an uncompromising pursuit of excellence.

”

CUSTOM COLUMN

This column captures the artistry of meticulously carved architectural details, highlighting the tiered design and textured patterns. Delicate arabesque motifs and bold sculpted rings showcase bespoke craftsmanship and an unwavering commitment to excellence. The pristine white finish enhances the purity of the design, reflecting precision and sophistication. More than construction, this is a masterpiece in stone—a testament to skill, passion, and the pursuit of perfection.



Villa Meru Project



3D Render



Completed



3D Render



Completed



KENNY HILLS





- **Added a fourth level**, creating a **spacious master bedroom suite** with panoramic views.

- **Incorporated a garden and an indoor swimming pool**, creating a serene, resort-like environment.

This project reflects our commitment to **architectural excellence and structural innovation**, delivering a home that is as breathtaking as it is functional.



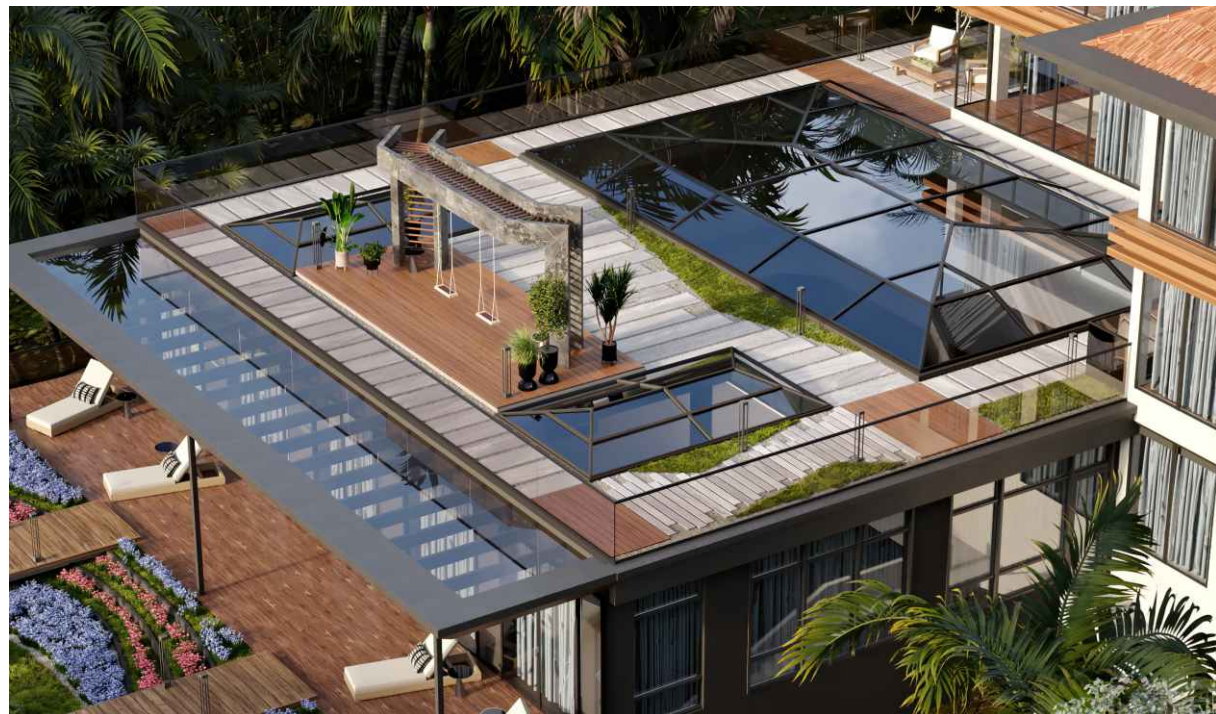


Kenny Hills Project – A Unique & Innovative Transformation
(On going project)

The **Kenny Hills Project** stands as one of our most **ambitious and innovative** undertakings, where we completely **transformed both the interior and exterior** of this luxurious residence. Spanning nearly **40,000 square feet**, this home was reimagined to enhance both functionality and elegance.

Key Transformations:

- **Designed and built a slope car road**, ensuring smooth vehicle access.
- **Expanded car parking capacity**, providing both convenience and luxury.
- **Fully redefined the interior and exterior**, blending modern aesthetics with timeless elegance.



Kenny Hills Skyline Pergola

A refined outdoor pergola designed to complement the exclusivity of Kenny Hills, offering an uninterrupted view of the Kuala Lumpur skyline. Featuring a suspended swing for a serene experience, the design integrates marble-textured panels, warm wooden elements, and a floating deck over a reflective water surface. Enhanced with minimalist furnishings and lush greenery, this architectural masterpiece blends luxury with nature, creating the perfect urban retreat. Underneath we designed a car park for 10 cars.



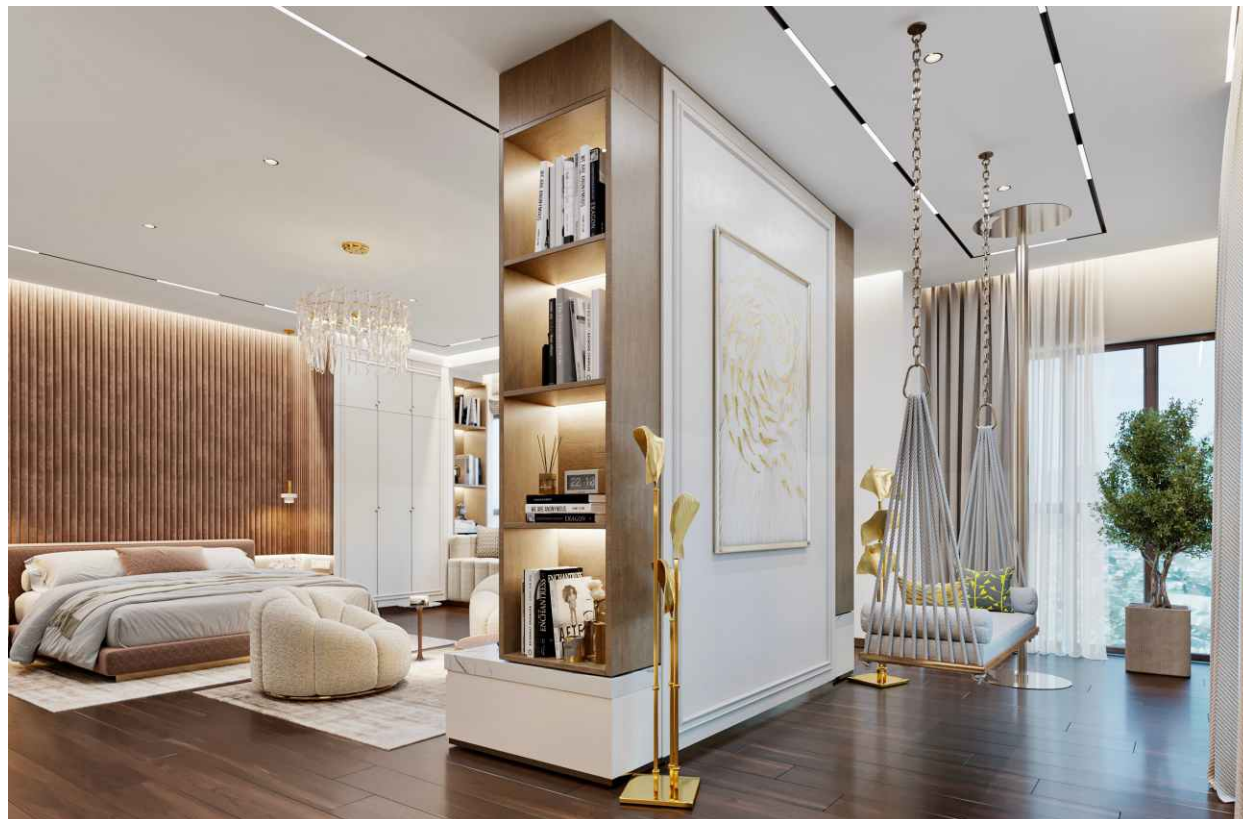


This **swimming pool** area seamlessly blends **luxury** with **architectural** finesse. The sunlit atrium, sophisticated lounge, and chic bar are crafted with high-end materials, ensuring both comfort and exclusivity.

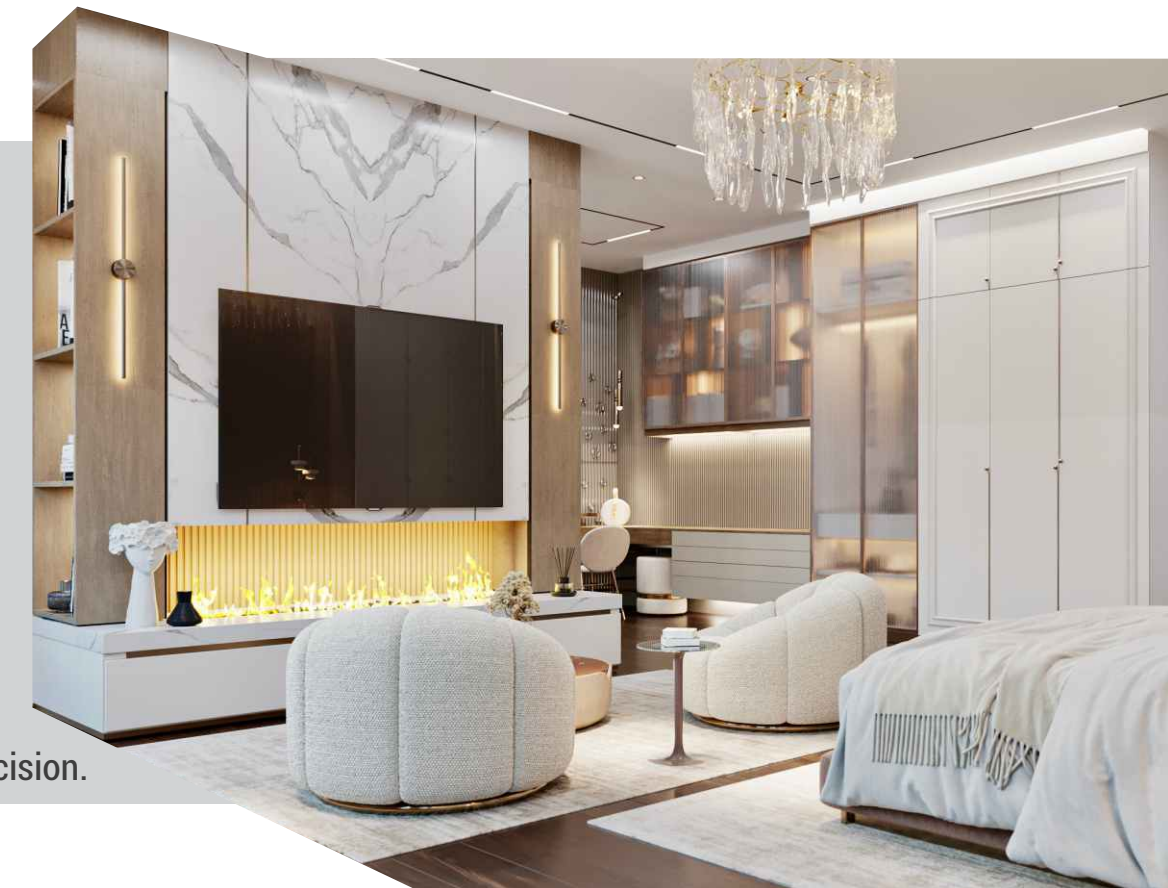
At the heart of the space, the **indoor pool** embodies wellness and tranquillity, while a striking spiral staircase adds dramatic flair, leading to private retreats. **Expansive glass** ceilings, opulent furnishings, and refined lighting cultivate an atmosphere of grandeur and indulgence – a celebration of **innovative luxury**.

This **bedroom interior** embodies luxury and sophistication, where every design radiates a distinct personality. **Warm wood** panelling and plush textures create an inviting ambiance, **while marble** accents and modern fireplaces add a touch of refined opulence.

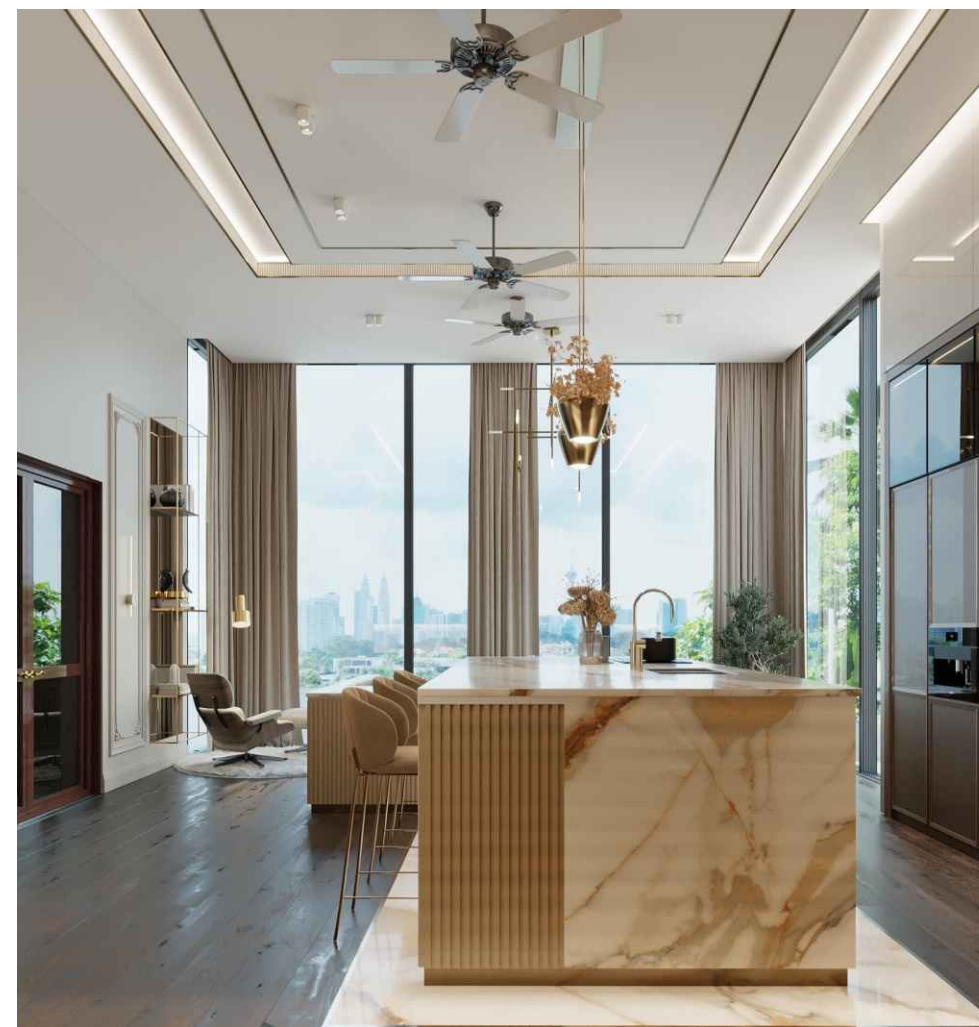
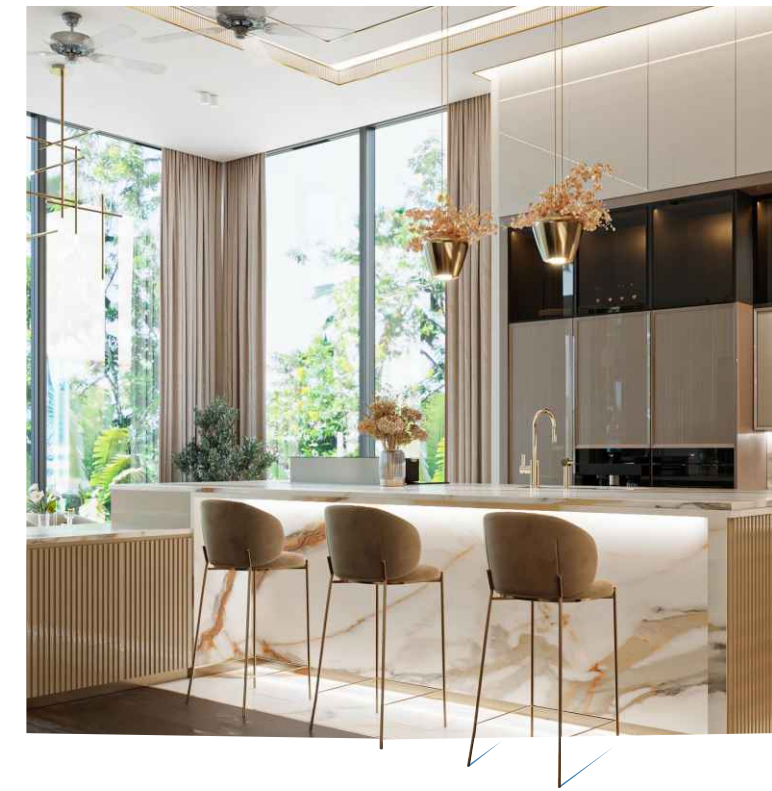
Meticulous attention to detail is evident in the curated lighting, thoughtfully **placed décor**, and flawlessly executed craftsmanship. From intricate wall designs to perfectly balanced furniture arrangements, each space is a personalized sanctuary of tranquillity and comfort. **This collection** is more than just aesthetics—it's a testament to bespoke design, individuality, and the art of **luxurious living**.

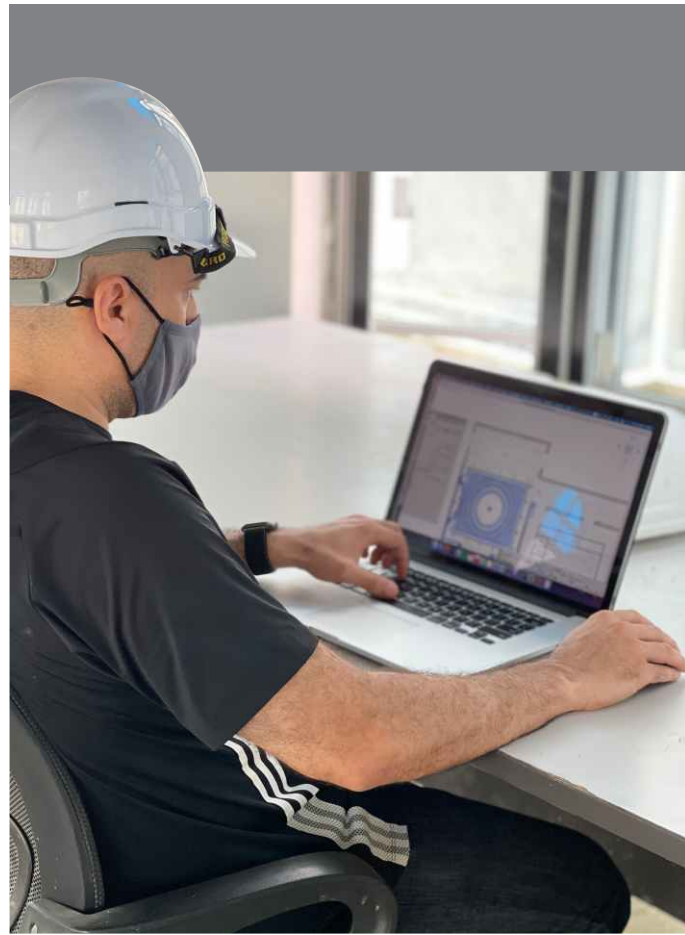


At **DMR Design & Build**, we believe that precision in design leads to perfection in execution. Our **3D design team** meticulously focuses on every detail, from textures to material finishes, ensuring that our clients and construction team can **truly visualize and feel** the final outcome before building begins. With our commitment to accuracy and craftsmanship, each project we deliver achieves an **80-90% match** to the proposed design—bringing our clients' visions to life with exceptional precision.



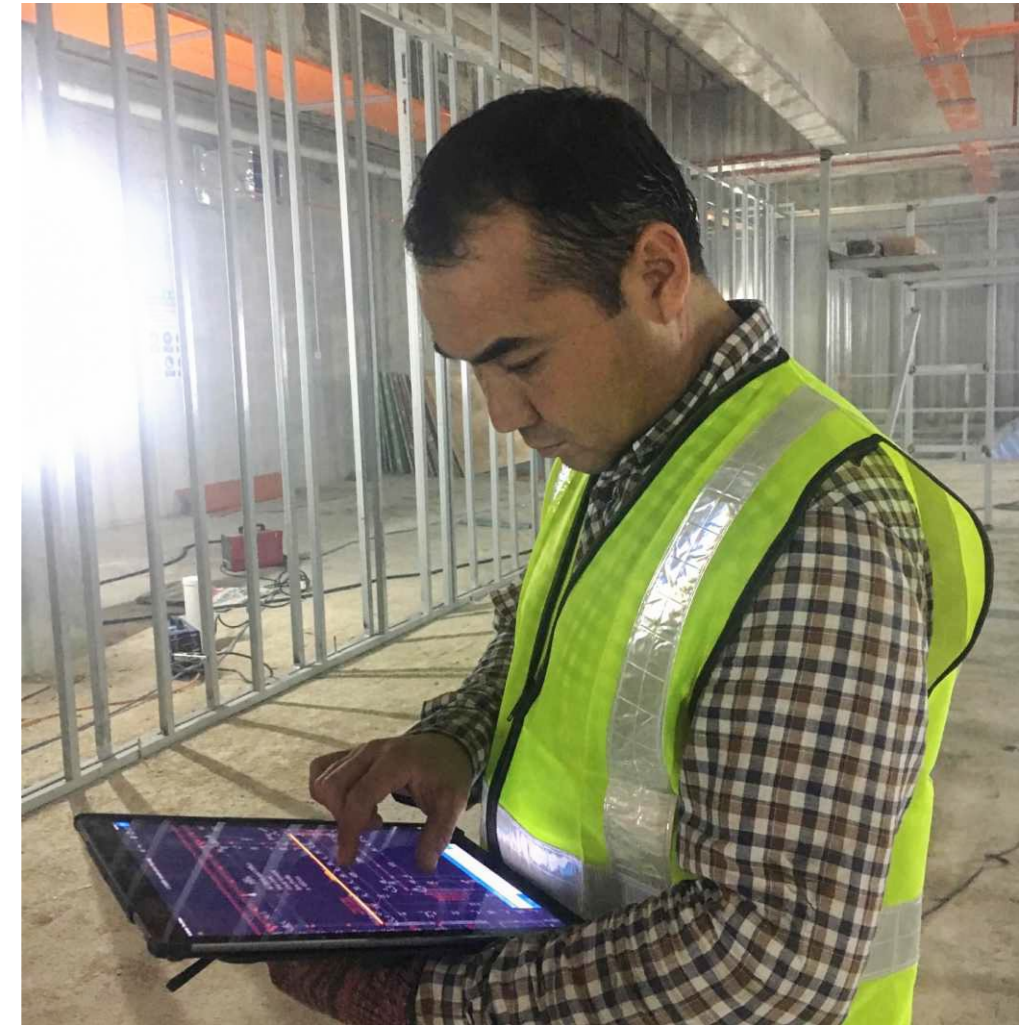
Expert 3D Design & Visualization
At DMR Design & Build, our design team consists of highly skilled professionals with at least 7-8 years of experience in the industry. We utilize industry-leading software such as **AutoCAD, Revit, and 3ds Max** to create highly detailed and precise designs. For rendering, we rely on the **Corona Rendering Engine**, ensuring realistic textures, lighting, and materials that allow our clients and construction team to fully visualize the final outcome. This level of expertise and technology enables us to deliver **exceptionally accurate designs**, ensuring that our completed projects achieve an **80-90% match** to the original concept.



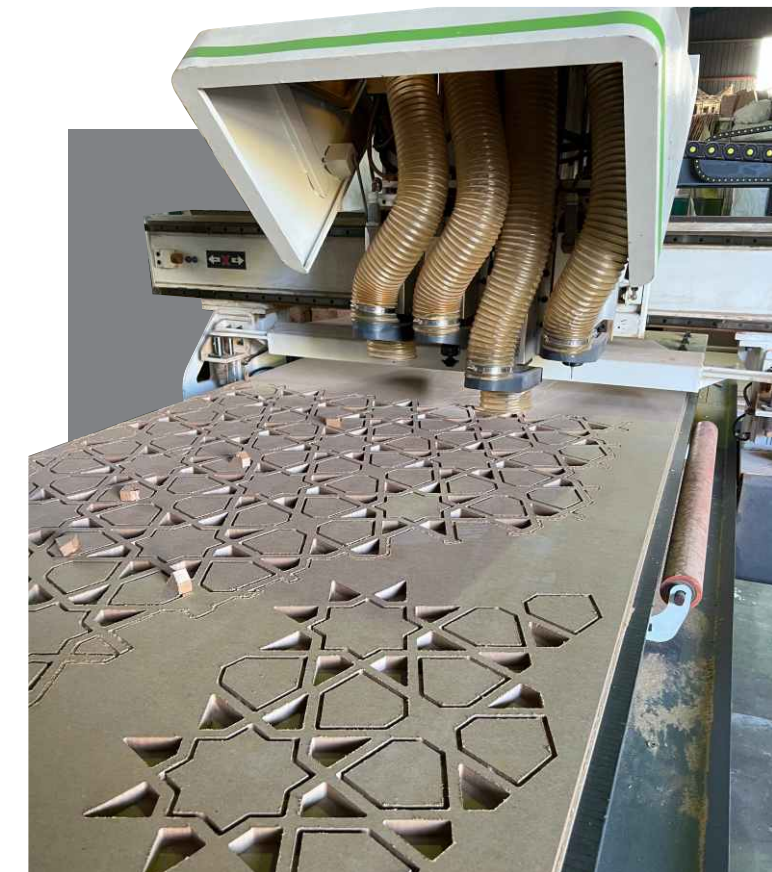


Skilled **professionals engage** in the art of design and construction, exemplifying a commitment to excellence. Equipped with protective gear, meticulously reviews, mood boards, digital blueprints we ensure precision and safety where our designers are equally immersed, evaluate material samples and **architectural renderings, showcasing** a hands-on, tailored approach.

Together, their expertise and attention to detail fuse **technological innovation** with artistic sensibility to create a final product that is both functional and **visually captivating**.



Construction managers review digital blueprints on-site, ensuring precision and effective problem-solving. Experienced professionals collaborate over physical plans, refining every detail with expert care. The vision materializes as a CNC machine intricately carves geometric patterns, blending technology with craftsmanship. This journey is a testament to individual dedication and collective mastery, where innovation and execution unite in the relentless pursuit of excellence – a true reflection of our unwavering commitment. For a couple of seconds.



TRX Tarbush Restaurant Project



3D Render



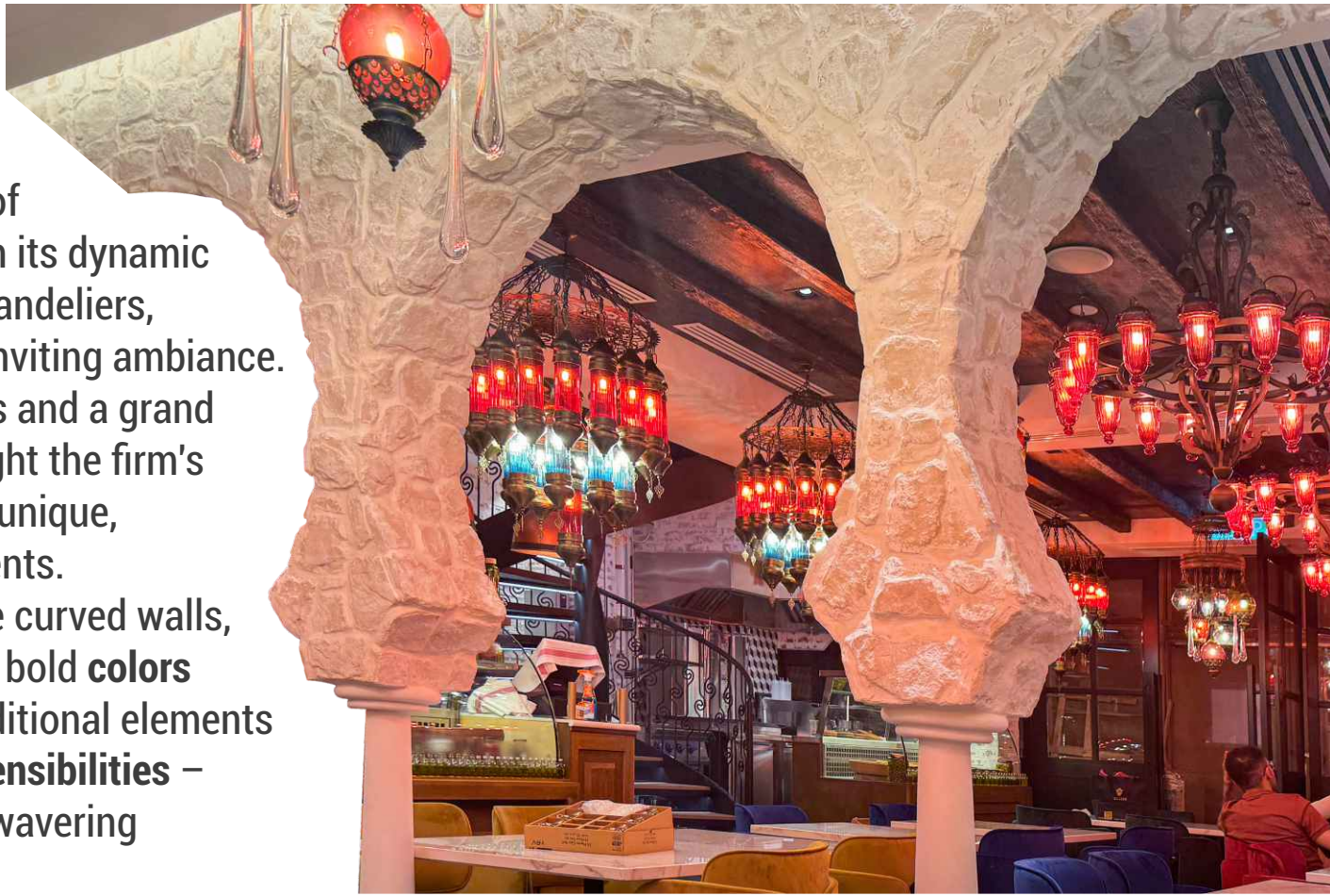
Completed

”

DMR DESIGN

This interior radiates of vibrant energy through its dynamic lighting and ornate chandeliers, **creating** a warm and inviting ambiance. Intimate dining spaces and a grand spiral staircase highlight the firm's dedication to crafting unique, memorable environments.

Rich textures of stone curved walls, intricate patterns, and bold **colors** **seamlessly** merge traditional elements with **modern design sensibilities** – a testament to our unwavering commitment



TRX Tarbush Restaurant Project





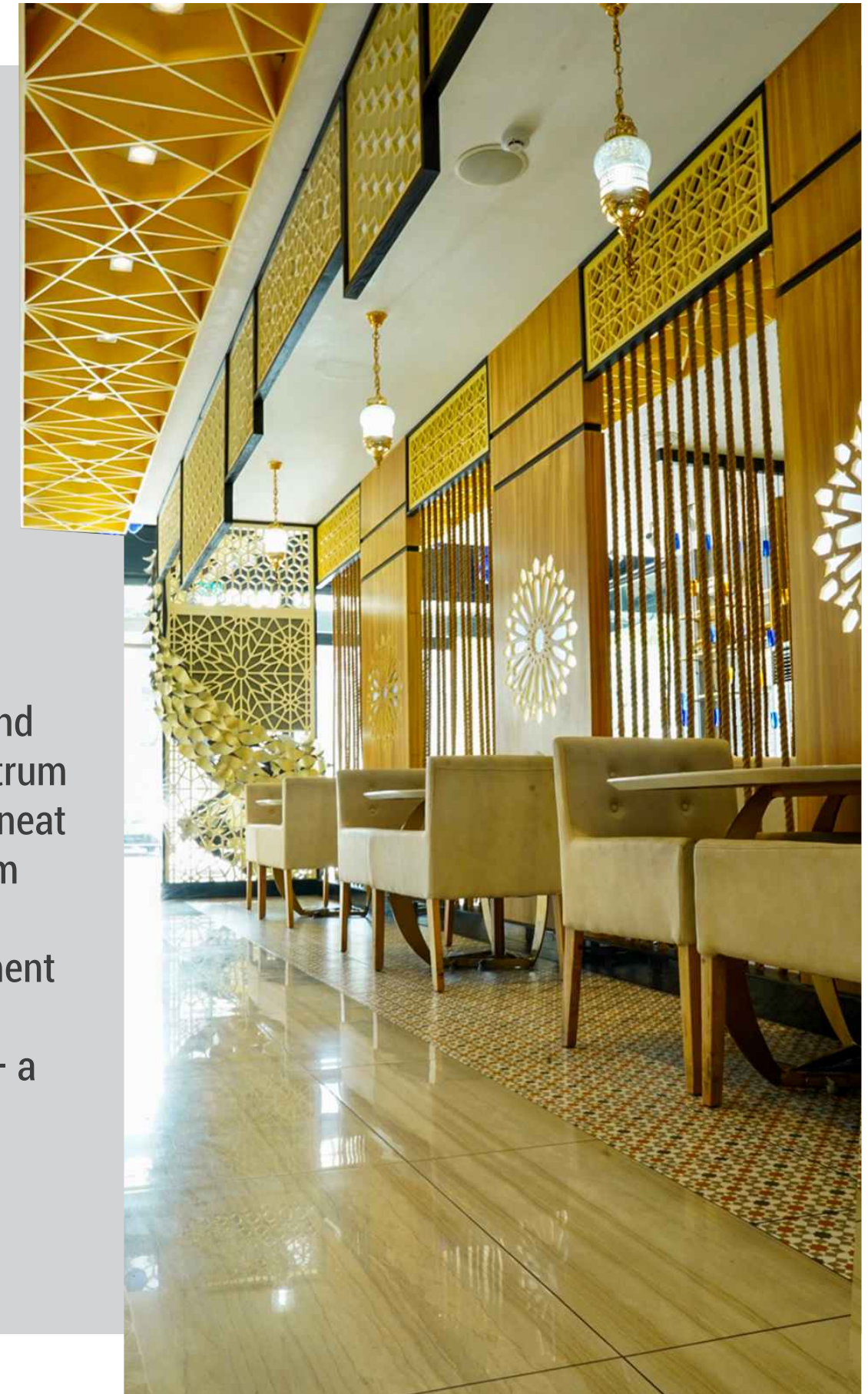
Yahala Restaurant Project



Yahala Restaurant - Award-Winning Turnkey Project

At DMR Design & Build, we take pride in delivering exceptional interior transformations, and our work on **Yahala Restaurant** stands as a testament to our expertise. Located in the heart of **Kuala Lumpur on Ampang Road**, this **three-story** building required a complete transformation into a luxurious **Arabic-style** dining experience. **Ground Floor:** Main dining area, designed to offer an immersive Middle Eastern ambiance. **First Floor:** A grand **wedding hall and event space**, crafted with elegant details for unforgettable celebrations. **Second Floor:** A refined **shisha and dining lounge**, blending comfort and sophistication. This **turnkey project**, executed from **concept to completion**, was recognized with the **Asia Pacific Award**, highlighting our commitment to excellence in design and construction.

A tastefully designed restaurant interior comes to life through bespoke furniture set against a rich cultural backdrop. Intricate, **CNC cut geometrically** patterned screens and **warm, golden** lighting establish a sophisticated ambiance that highlights both visual allure and functionality. The whole spectrum of design is covered from the neat patterned flooring, to the warm lighting and matching **warm coloured furniture**. Every element speaks to expertise and a commitment to excellence – a tribute to refined artistry and visionary execution.

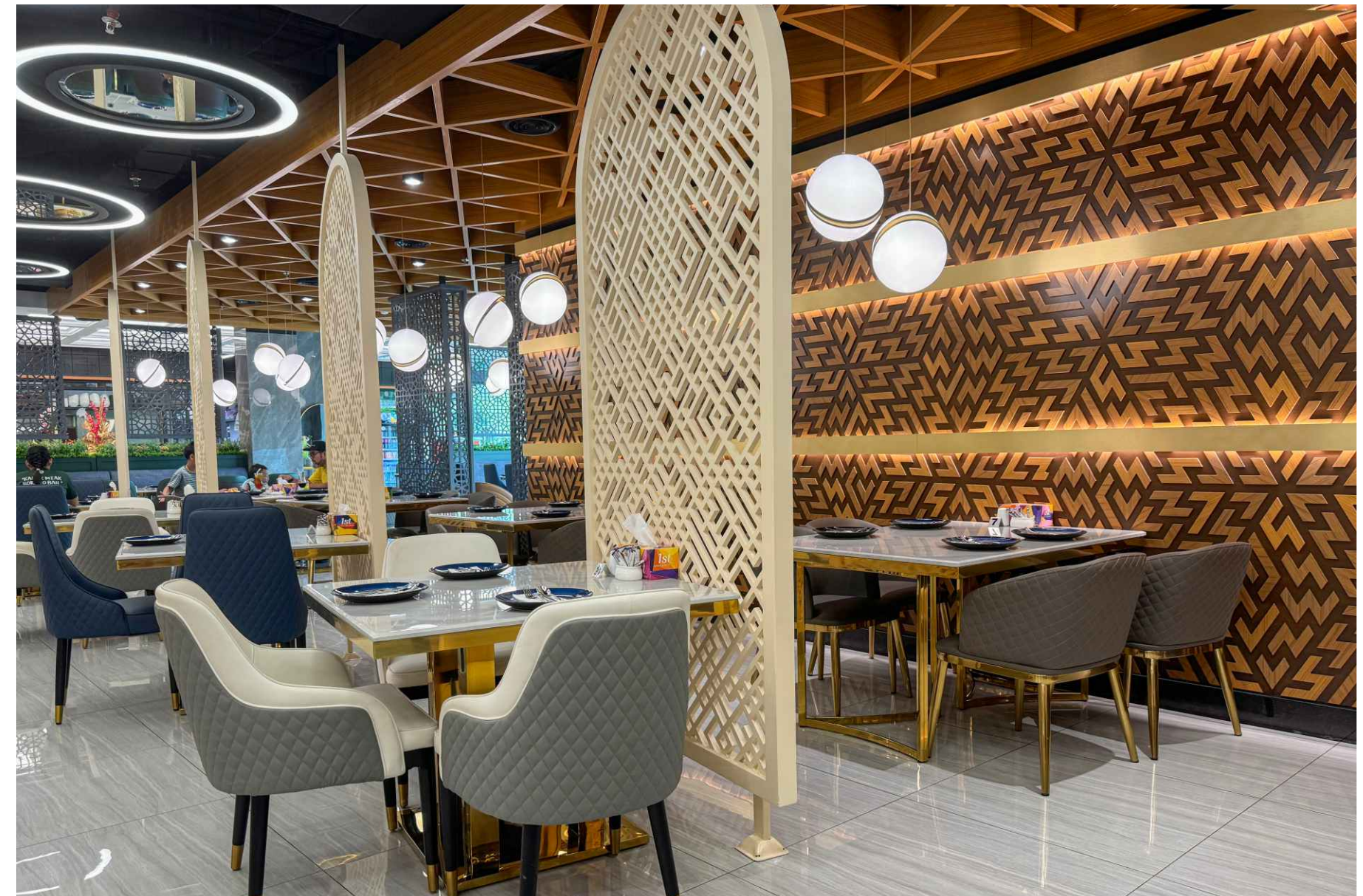




3D Render



Completed



Conciseness, integrity and rigor of lines, as well as the most non-trivial color combinations formed the basis for the design of a new collection of cabinet and upholstered furniture. The boundaries between design and contemporary art are gradually blurring.



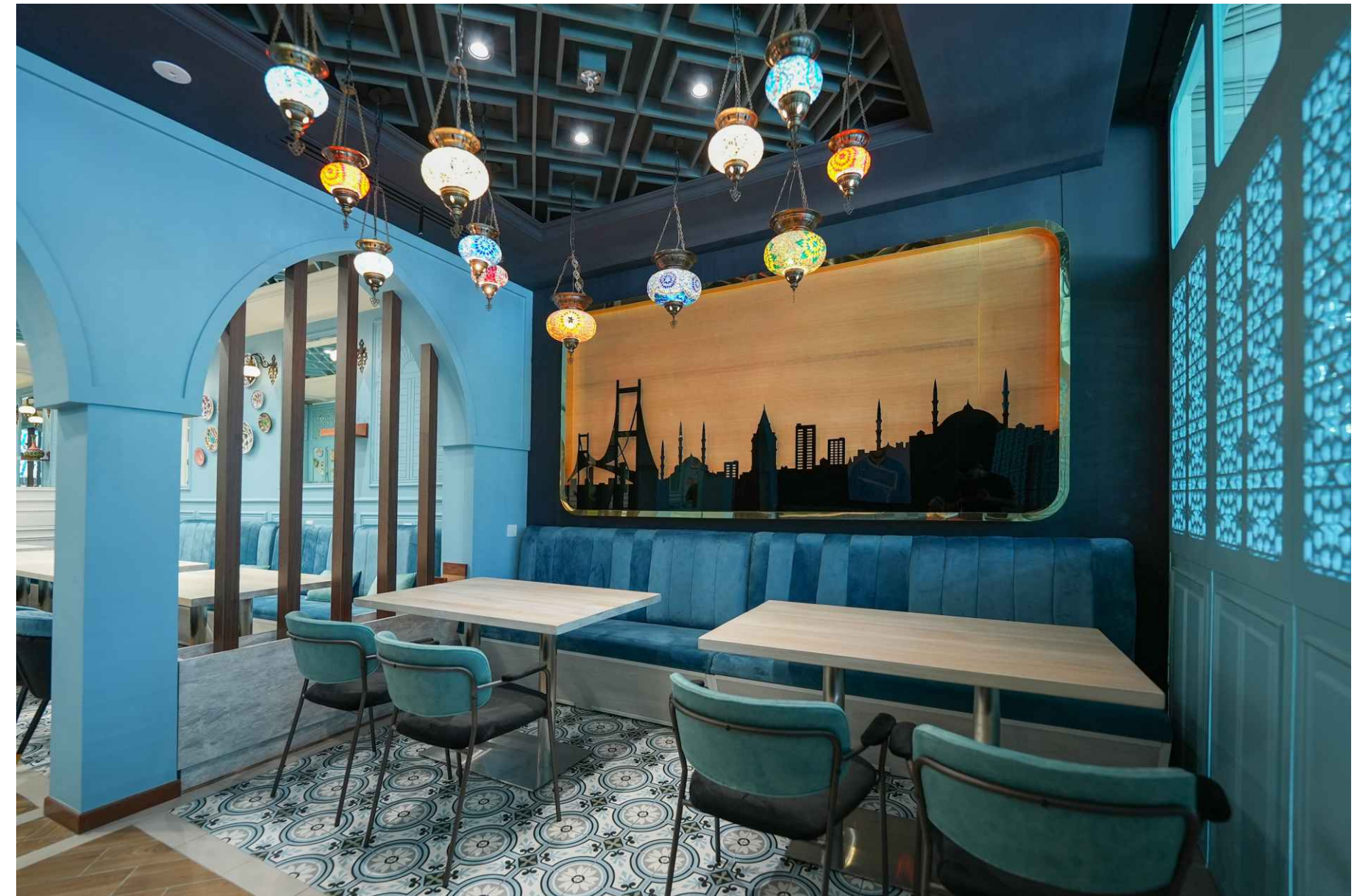
Istanbul Cafe Project



3D Render



Completed



Art of living in the style of **DMR design studio** is a manifesto of individuality, an ongoing search for excellence and the value of contemporary traditions. The concept of our company is based on three key elements - the expansion of activities to create a synergistic effect, following the principle of "**design as art**" and a multifaceted creative approach.

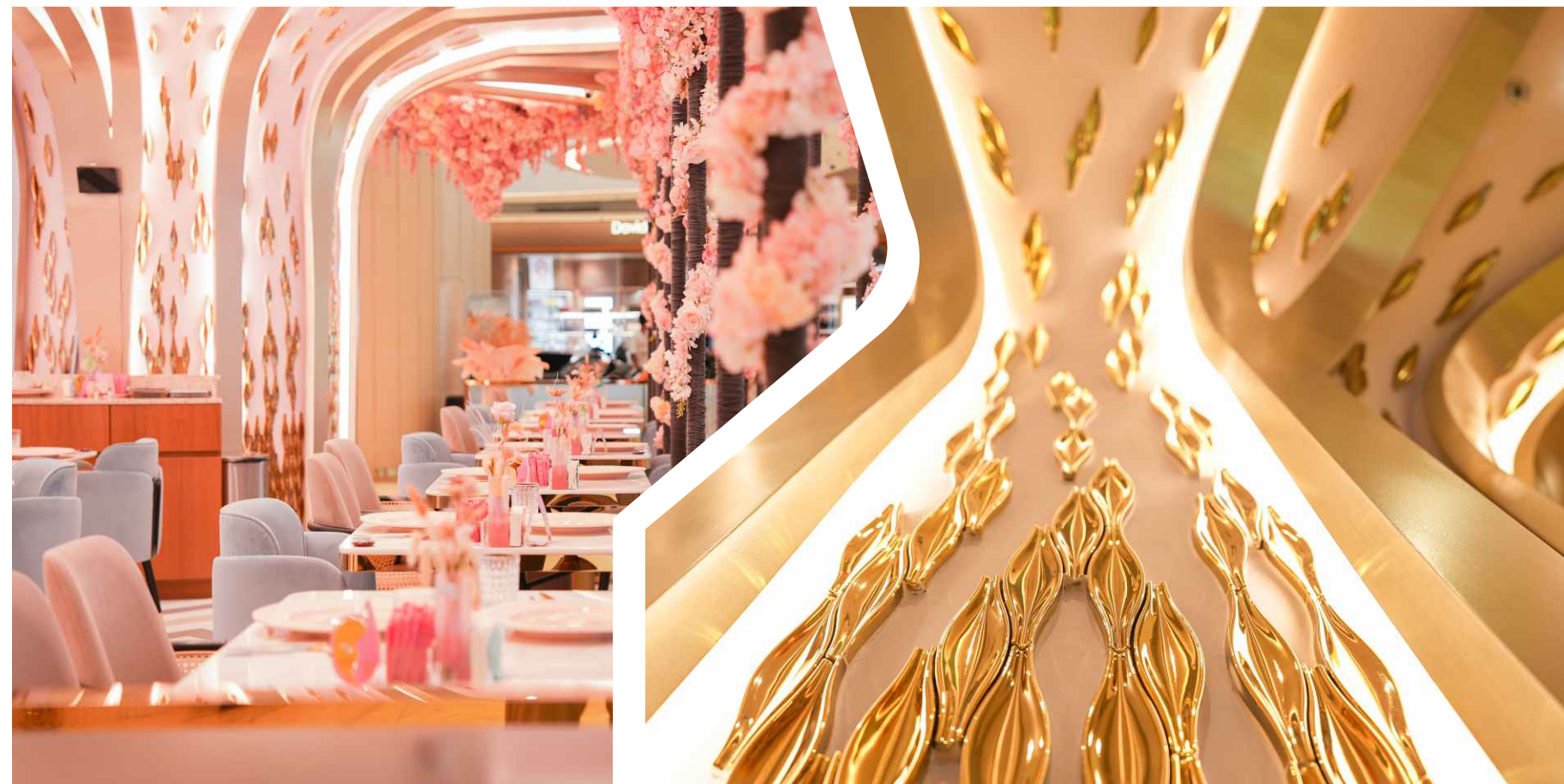
Opera Café Restaurant Project

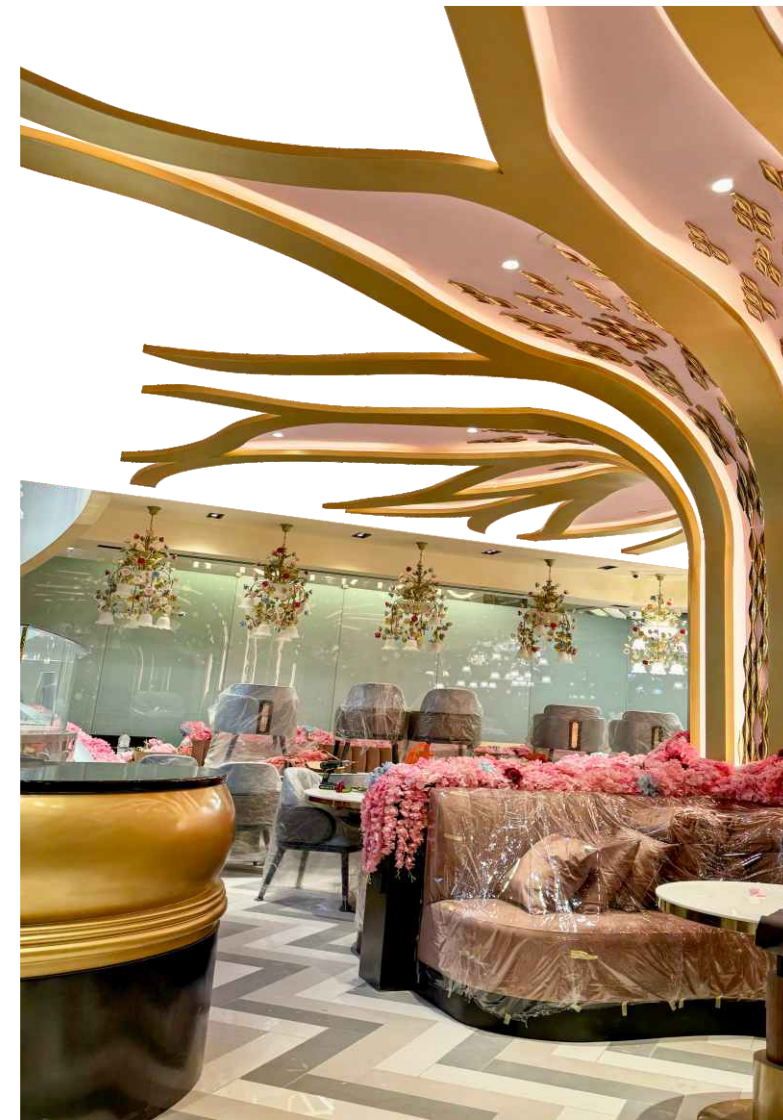
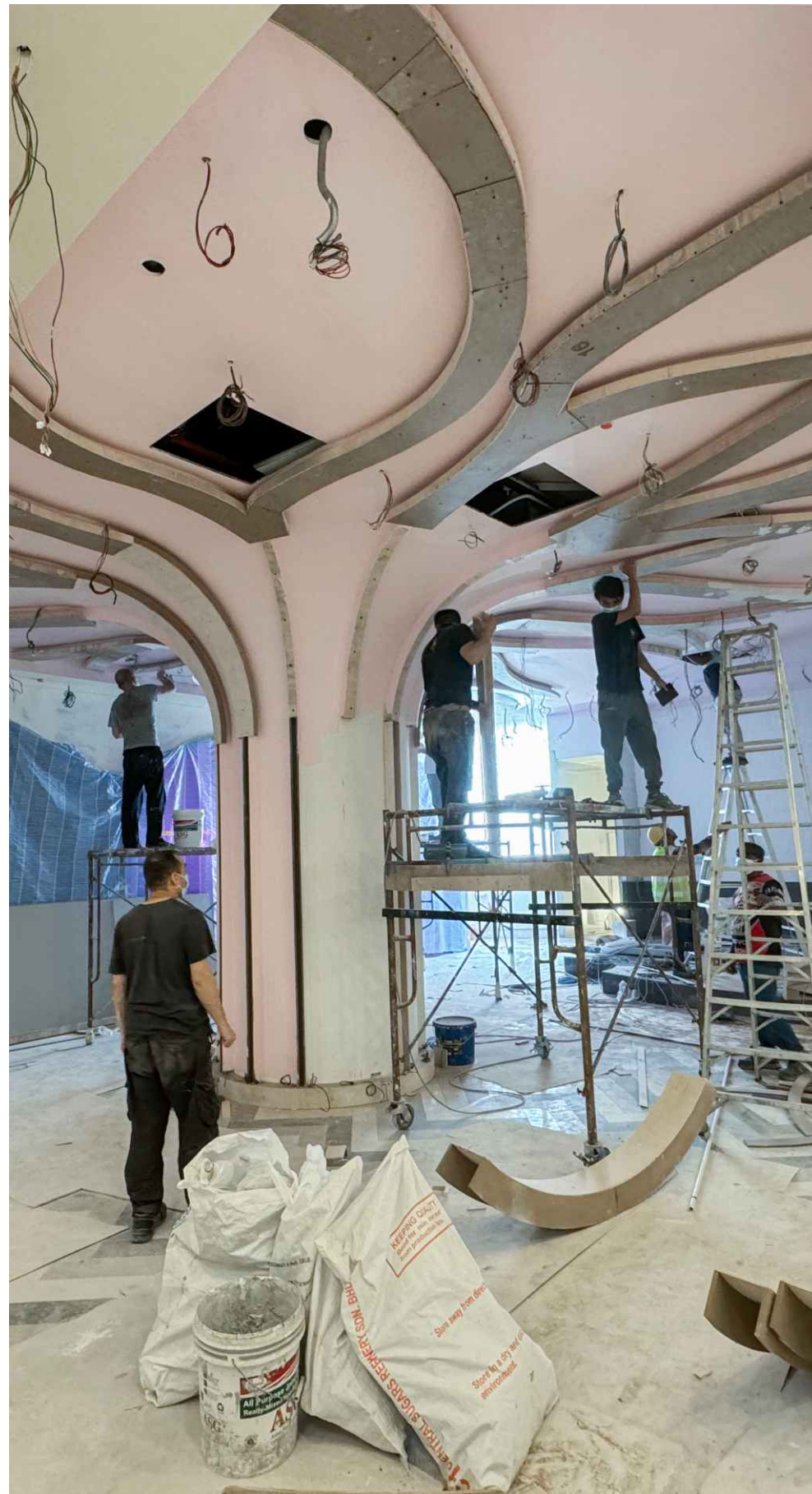


3D Render



Completed





OPERA DESIGN

From raw construction to a stunning finished state, skilled craftsmen meticulously assemble an intricate ceiling framework, laying the foundation for the client's vision.



The space transforms into a luxurious opera house, where elegant, tree-like structures bathed in warm light create a dramatic yet inviting ambiance, and delicate floral arrangements add a refined touch. This visual journey embodies dedication, artistry, and the relentless pursuit of excellence – testament to artistry, sophistication, and an uncompromising pursuit of excellence.





”

DMR DESIGN

DMR Design showcases exceptional **craftsmanship** through its intricate, geometrically inspired furniture. Skilled artisans carefully work with richly-toned, laser-cut panels, **reflecting** a dedication to precision and detail. Every piece embodies bespoke artistry, where form meets function in **perfect harmony** – a testament to timeless elegance and **innovation**.

CARPENTRY & METAL WORKS





Loccitane Shop Lot Project

”

DMR DESIGN

A design set out to offer a vibrant and immersive retail experience with a cheerful yellow palette and natural textures set the stage, while bespoke displays, curated product placements, and iconic yellow Immortelle flowers underscore a perfect blend of functionality and elegance.

Each layout uniquely elevates the brand's identity, reflecting both exceptional quality and innovative design – a true hallmark of visionary excellence.





”

DMR DESIGN

Skilled artisans install shelving, lighting, and intricate ceiling work with precision, resulting in clean lines, vibrant colors, and a cohesive brand identity.

A subtle nod to a deeper narrative reveals the passion behind each design choice, creating a space that not only embodies beauty but also reflects the brand's distinct character and excellence – a masterstroke of visionary design.



Jimmy Choo store Project



Jimmy Choo - Vattanac Capital, Cambodia

At DMR Design & Build, we take pride in delivering world-class craftsmanship for luxury brands.

One of our prestigious projects was the **Jimmy Choo boutique** located in **Vattanac Capital**, Cambodia's premier luxury shopping mall. From A to Z, our team meticulously built this boutique, ensuring every element reflected the elegance and prestige of the **Jimmy Choo brand**.

The wall finishes and **titanium metal works**, sourced and crafted in Cambodia, were executed with **maximum precision and quality**. Every detail was carefully designed and constructed to create a space that embodies luxury, sophistication, and timeless beauty.



” Setel HQ Office project

This modern, flexible workspace integrates collaborative cafe-style zones and open-plan desks, enhanced by natural light, warm wood tones, and vibrant accents. A special acoustic feature is added to the lights to make the work place more enjoyable.

Sophisticated hexagonal lighting and ceiling details add a refined, contemporary touch, showcasing DMR Design's expertise in crafting environments that drive productivity and innovation – an orchestration of creativity and precision.



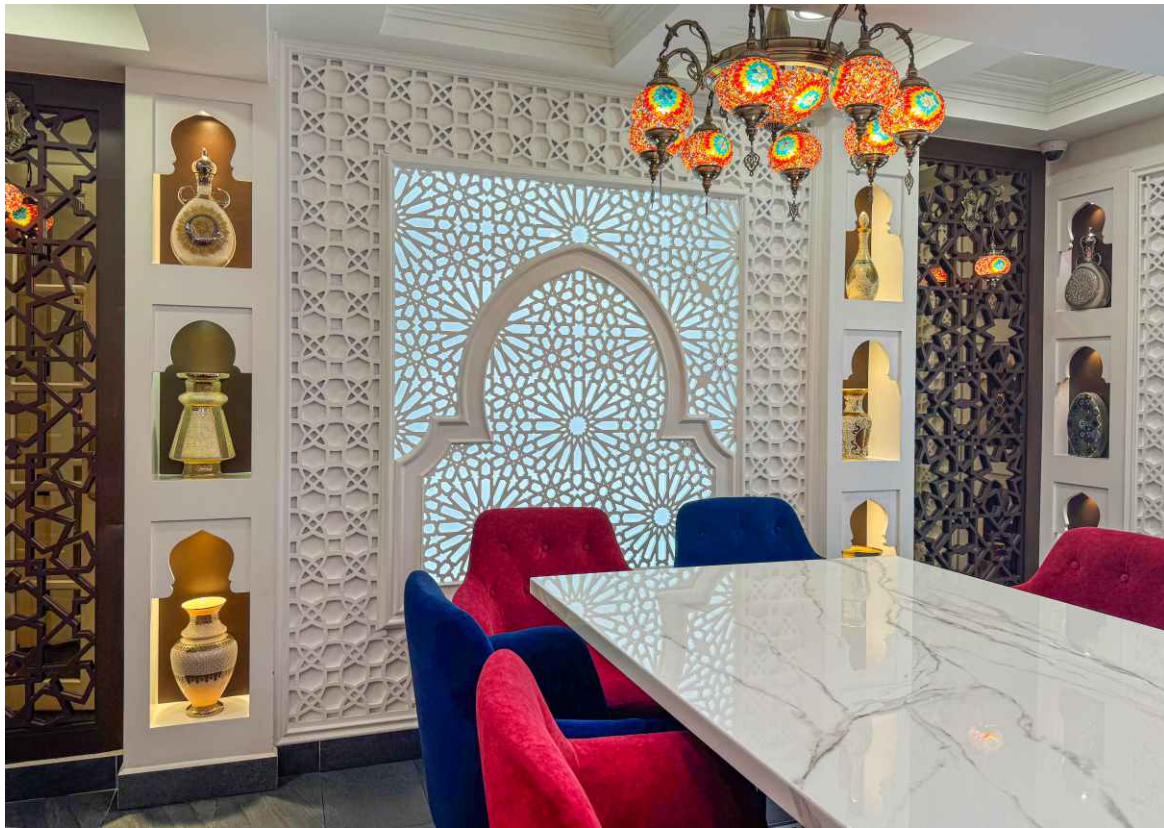


”

Damascus Restaurant Project

The striking Damascus restaurant in Bukit Bintang showcasing its façade illuminated with an intricate, geometrically patterned CNC work is reminiscent of traditional Damascene steel which speaks to a meticulous attention to detail and a commitment to celebrating cultural heritage. The warm light façade against the CNC patterned work is a testament to artistry, sophistication, and an uncompromising pursuit of excellence exhibited by DMR Design.





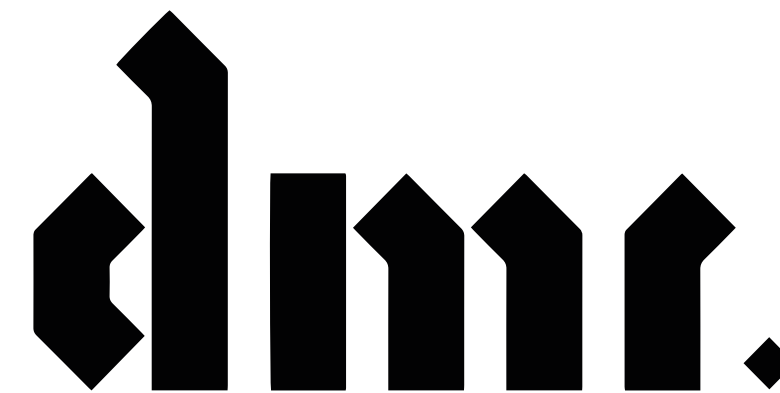
Yahala Restaurant Project



3D Render



Completed



DESIGN STUDIO

INNOVATIVE THINKING

DMR design studio
aims to provide professional service
to its clients satisfaction by providing service excellence,
honouring deadlines, and personalized design
according to clients requirements.